



£140,000

Central Drive, Shirebrook, Mansfield,

Welcome to **BuckleyBrown**, where every home is carefully presented, so you can explore with clarity and confidence.

BuckleyBrown
ESTATE AGENTS

"Having been refurbished throughout to a high standard, this attractive three-bedroom mid-terrace offers buyers the opportunity to move straight in with no work required. With broad appeal to both first-time buyers seeking a stylish first home and investors looking for a ready-to-let property, this is a fantastic opportunity in today's market."

- Stacey, Valuer



MOVE IN READY OPPORTUNITY

Step inside this beautifully renovated three-bedroom mid-terrace and discover a home that is ready to move straight into.

Finished in a modern and neutral style throughout, the property offers bright, well-presented accommodation perfectly suited to contemporary living. Whether you're a first-time buyer looking for your first home or an investor seeking a turnkey opportunity, this property combines style, practicality, and excellent value in equal measure.



THE FINER DETAILS

Offered to the market with excellent potential, this spacious home provides a versatile layout and a great opportunity for buyers to make it their own.

This well-proportioned home offers spacious and versatile accommodation throughout. The ground floor features a separate living room and dining room, both bright and airy in feel, alongside a fully equipped kitchen and a convenient downstairs bathroom, creating a practical layout ideal for everyday living.

Upstairs, the property provides three good-sized bedrooms, offering excellent potential for buyers to personalise and create their own style. With a neutral, blank-canvas feel, the first floor presents an ideal opportunity for those looking to put their own stamp on a home.

Externally, the front of the property offers planning for off-road parking, adding valuable convenience. To the rear, there is an enclosed tarmac courtyard, providing a low-maintenance outdoor space suitable for seating or storage while maintaining a sense of privacy.





BuckleyBrown
ESTATE AGENTS







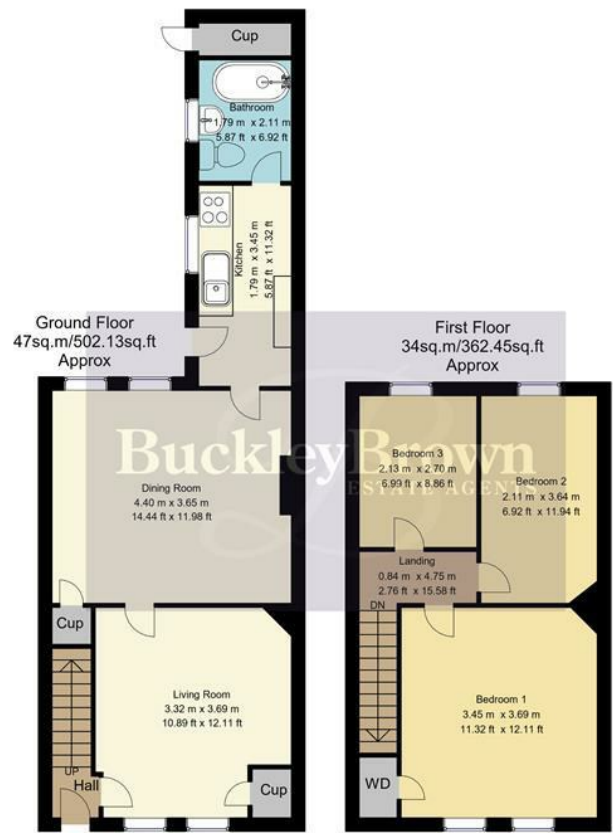
LIFE IN SHIREBROOK

Life in Shirebrook offers a strong sense of community combined with excellent everyday convenience.

The town provides a good range of local amenities including shops, supermarkets, cafés, schools, and leisure facilities, making it well-suited to families, first-time buyers, and commuters alike. Its close-knit feel and accessible services create a welcoming environment for residents of all ages.

Well positioned for transport links, Shirebrook benefits from easy access to nearby towns such as Mansfield and Worksop, as well as connections towards Chesterfield and the wider East Midlands via road and rail. Surrounded by green spaces and countryside walks, the area also offers plenty of opportunities for outdoor recreation, striking a great balance between town living and access to nature.





Whilst every attempt has been made to ensure the accuracy of the floor plan contained here, no responsibility is taken for incorrect measurements of doors, windows, appliances and room or any error, omission or misstatement. Exterior and interior walls are drawn to scale based on interior measurements. Any figure given is for initial guidance only and should not be relied on as basis of valuation. These plans are for marketing purposes only and should be used as such by any prospective purchase. Specially no guarantee is should not be relied on as a basis of valuation. These plans are for marketing purposes only and should be used as such by any prospective purchase. Specifically no guarantee is given on the total square footage of the property if quoted on this plan.

Key Features

Separate living and dining rooms

Three blank canvas bedrooms

Fully equipped kitchen

Convenient ground floor bathroom

Planning for off road parking

Enclosed rear courtyard

Refurbished throughout

Size Approximately 864 sq.ft

Energy Performance Certificate (EPC)

Rating D

Council Tax Band A

BuckleyBrown
ESTATE AGENTS



These particulars are intended as a guide only and do not form part of any offer or contract. All descriptions, measurements, images and plans are provided for illustration purposes and should not be relied upon as statements of fact. Prospective purchasers should satisfy themselves as to the accuracy of the information. Buckley Brown Estate Agents accept no liability for any loss arising from reliance on these details.

© Buckley Brown Estate Agents 2026. All rights reserved.

Exceptional homes deserve
exceptional representation.

Let's Chat.

01623 633633

mansfield@buckleybrown.co.uk

buckleybrown.co.uk

BuckleyBrown
ESTATE AGENTS